





📍 10 The Pavilion, Wadswick Green, Corsham, Wiltshire, SN13 9GS

🏠 Asking Price £260,000

At Wadswick Green Retirement homes you can enjoy the comfort and convenience of living in a contemporary new village for people over 60, set in the stunning Wiltshire countryside. Here you can keep living life to the full and if there's a time when you need more support, they are there for you. The retirement village is operated by Rangeford villages

- Luxury Retirement Apartment
- 1 Bedroom, on the First Floor with views across Wadswick Village
- Luxury En-suite & Private East Facing Balcony
- Concierge & Transport Service
- Swimming Pool & Spa Facilities
- Restaurant & Coffee Shop
- Rangeford Domiciliary Care
- Fully Re decorated with New Bedroom Carpets & Flooring
- 496 sq ft.

🔑 Leasehold

🏠 EPC Rating B



This delightful 1-bedroom pre-owned retirement apartment operated by Rangeford Villages boasts lovely views from the open-plan living room and an east-facing private balcony. The apartment has been fully redecorated with brand-new bedroom carpets and refurbished flooring in the rest of the flat. The kitchen has integrated Bosch appliances including an oven, hob, washer/dryer, slimline dishwasher and fridge with freezer compartment. A good-sized master bedroom offers fitted wardrobes and a Juliette balcony having wonderful views over the Wadswick village, being east facing, so ideal to enjoy the morning sunshine. The bathroom, which can be accessed from both the bedroom and the entrance hall, offers Porcelanosa sanitary ware, a spacious shower with an attractive ceramic mosaic floor and a heated towel rail. The flooring throughout the living area is high-quality engineered hardwood in a light oak shade, with thermostatically controlled underfloor heating via a centralised system.

#### **Situation**

Set in the stunning Wiltshire countryside, in 25 beautifully landscaped grounds, Wadswick Green Retirement Village is a place where you can enjoy the comfort and convenience of living in a contemporary new village for people over 60. Here you can continue to live life to the full and if there's a time when you need more support, help is at hand.

#### **Property Information**

Leasehold  
Council Tax Band C  
Mains water, sewage & electricity  
EPC rating: B

#### **Rangeford Care**

Rangeford Care which is based within the village provides outstanding domiciliary care plans to residents who require more support to manage their daily lives. (Additional charges apply) \*\*\* Annual service charges, ground rent and Deferred Event Fee are payable in addition to the purchase price. Please ask the Wadswick Green Sales Advisor for further details\*\*\*

#### **Disclaimer**

The dimensions shown on the floor are approximate, and individual apartment dimensions will be confirmed upon an agreed sale. Please note, apart from the kitchen fittings described and window dressings, the apartment is sold unfurnished.





# The Bremhill

First Floor

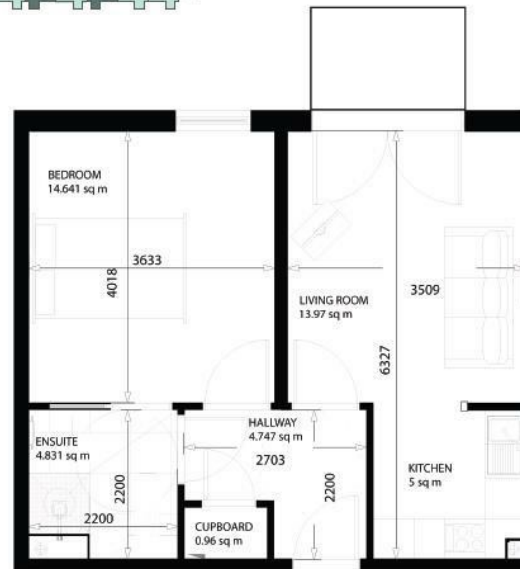


Second Floor



1 Bedroom Apartment

496 sq ft



Apartment floor plan orientation

as shown

mirror image

Disclaimer: These particulars, whilst believed to be accurate are set out as a general outline only for guidance and do not constitute any part of an offer or contract. Intending purchasers should not rely on them as statements of representation of fact, but must satisfy themselves by inspection or otherwise as to their accuracy. No person in this firm's employment has the authority to make or give any representation or warranty in respect of the property. All measurements and distances are approximate only. Your home is at risk if you do not keep up repayments on a mortgage or other loan secured on it.